



South Woods Elementary, A Community Partnership School

At South Woods Elementary, A Community Partnership School our goal is to empower children and families to succeed.

Leading Students to Success

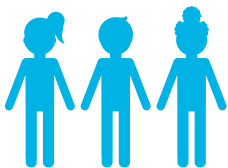
At South Woods, programs and services available to students build on daily classroom learning, and include the following:

- Counseling
- On-site dental screenings and referrals
- Free summer enrichment programming

Serving Families

At South Woods, we offer something no other school has in the community: A full-time Parent Resource Center, which allows you to play an active role in your child's education.

Here, you'll find a comfortable and welcoming environment featuring classes and events that offer opportunities to succeed.



Through the Community Partnership School™ model, **more than three times the number of students** (compared to the 2016-17 school year) **have participated in mental health counseling** at South Woods Elementary.

Partnership in Action

After a recent training provided by Children's Home Society of Florida to the South Woods Elementary, A Community Partnership School teaching staff, one member commented on how unique of an opportunity it is to teach at a Community Partnership School. The teacher shared that in her 20+ years of teaching she had never had the resources or tools she has now to help educate and support her students on a daily basis

For more information, please contact Chris Stone, Community Partnership School Director, at 904-547-8610 or Christopher.Stone@chsfl.org.

WWW.CHSFL.ORG/SOUTHWOODS

South Woods Elementary, A Community Partnership School is a partnership between St. Johns County Schools, Children's Home Society of Florida, Flagler Hospital and St Johns River State College



Community Partnership Schools



The Challenge

Thousands of students attending Title I schools arrive with heavy baggage: **hunger, homelessness, poverty, violence, mental health struggles, illness and more.** They carry so much weight that they simply cannot focus on their education.

The Solution: Community Partnership Schools

Community Partnership Schools provide support, services and solutions to help alleviate these burdens. As more weight is lifted, students find the balance to focus on learning so they can realize their full potential. Community Partnership Schools also engage parents and the community to empower students and families to succeed.

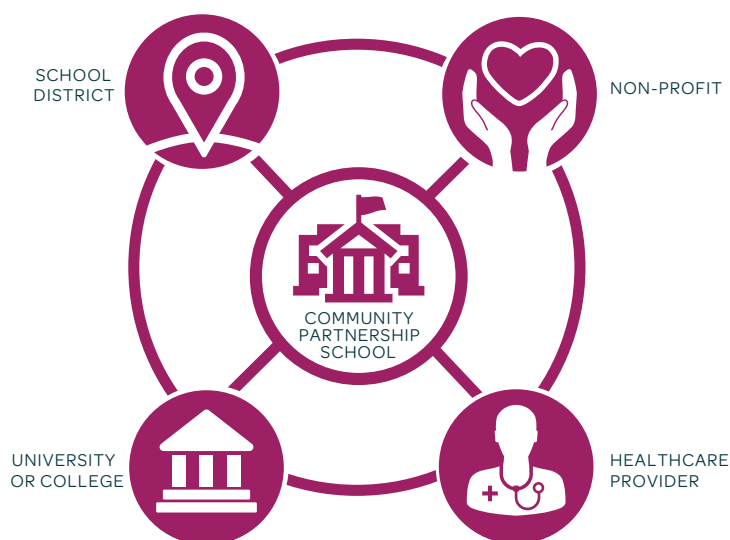
The core of every Community Partnership School is a strong foundation:

4 or more core partners: School district, reputable nonprofit like CHS, healthcare provider, college or university.

Long-term commitment: Partners make a 25-year (or longer) commitment.

Shared decision-making: Governed by a council of representatives from each partner organization, school leadership and community members to make decisions about funding, allocating resources, services and more.

Leveraged resources: Community Partnership Schools identify and coordinate local providers that can offer academic support programs, enrichment activities and wellness services at the school. For every \$1 spent to operate the Community Partnership School, partners bring an average of \$3 of additional resources to the school. By blending and braiding funding from multiple sectors (health, education, human services), we create opportunities in the school and surrounding community to remove barriers to learning and success.



Each Community Partnership School focuses on four pillars:

- ★ **Extended learning:** Academic support and enrichment take place before and after school, during weekends and in the summer to augment traditional learning during the school day.
- ★ **Student supports:** A range of health and social services are accessible on the school campus.
- ★ **Family & community engagement:** Families and the community are partners in children's education, and the school becomes a neighborhood center offering enrichment opportunities for both students and adults.
- ★ **Collaborative leadership:** A culture of shared governance and collective decision-making advances a unified vision to identify needs and provide appropriate resources and solutions in the school and community.

South Woods Elementary, A Community Partnership School is the hub of our community, a place focused on student success – in school and beyond. At South Woods Elementary, we strive to increase student success at school, provide access to resources to improve physical and emotional health, increase parental involvement, and empower students to shine.

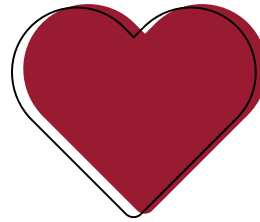
2017-2018 AT A GLANCE

HEALTH & WELLNESS



435

STUDENTS RECEIVED
DENTAL SCREENINGS,
REFERRALS & SEALANTS



40

STUDENTS RECEIVED
IN-SCHOOL COUNSELING

EDUCATION



150+

STUDENTS PARTICIPATED
IN ACADEMIC
ENRICHMENT/TUTORING



125+

STUDENTS PARTICIPATED IN
SUMMER TUTORING &
ENRICHMENT ACTIVITIES

FAMILY ENGAGEMENT



15

FAMILY EVENTS AND ACTIVITIES HELD

COMMUNITY ENGAGEMENT



1,200+

HOURS OF VOLUNTEERISM
CONTRIBUTED BY STUDENTS,
PARENTS & THE COMMUNITY



600

HOURS OF MENTORSHIP
PROVIDED BY 60
MENTORS

South Woods Elementary, A Community Partnership School, is a partnership among:

